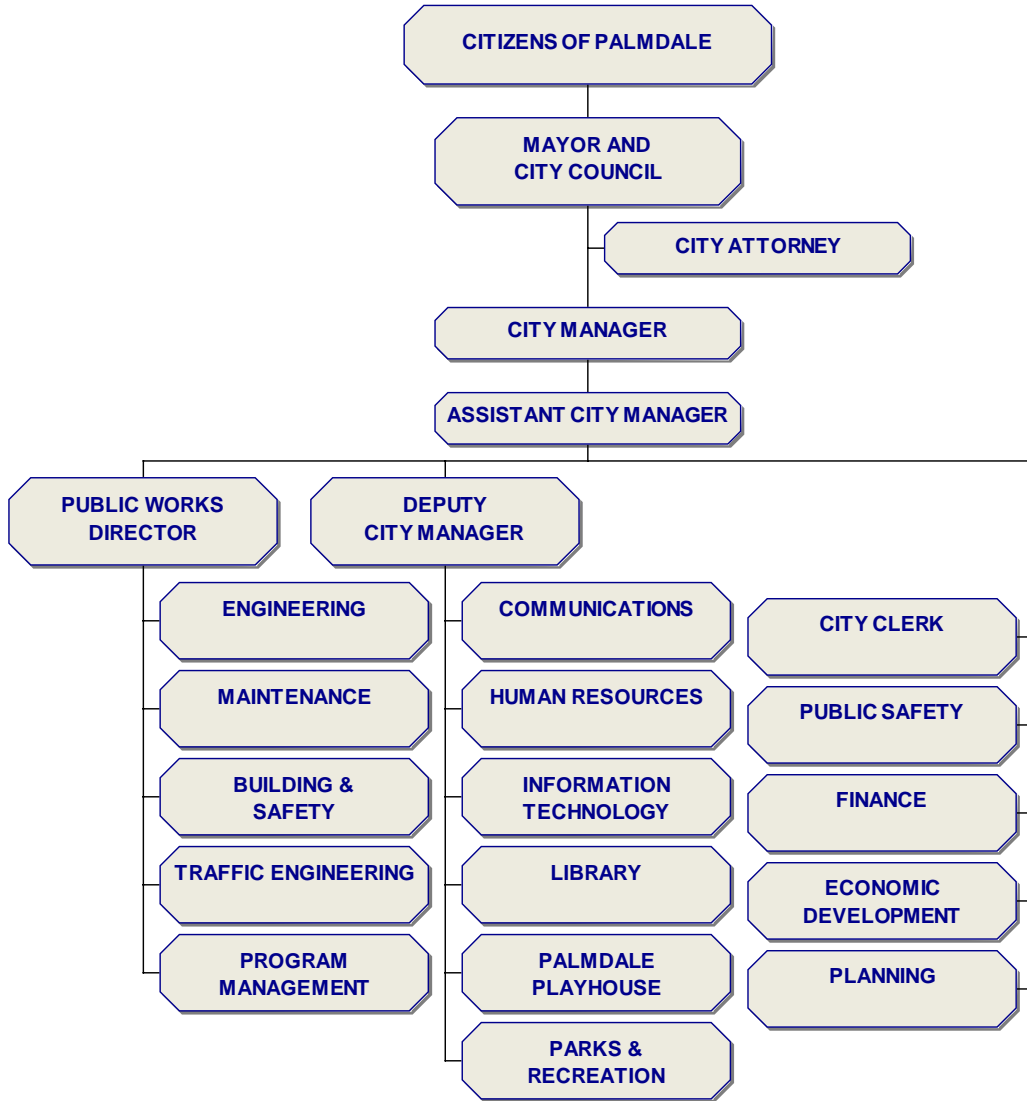
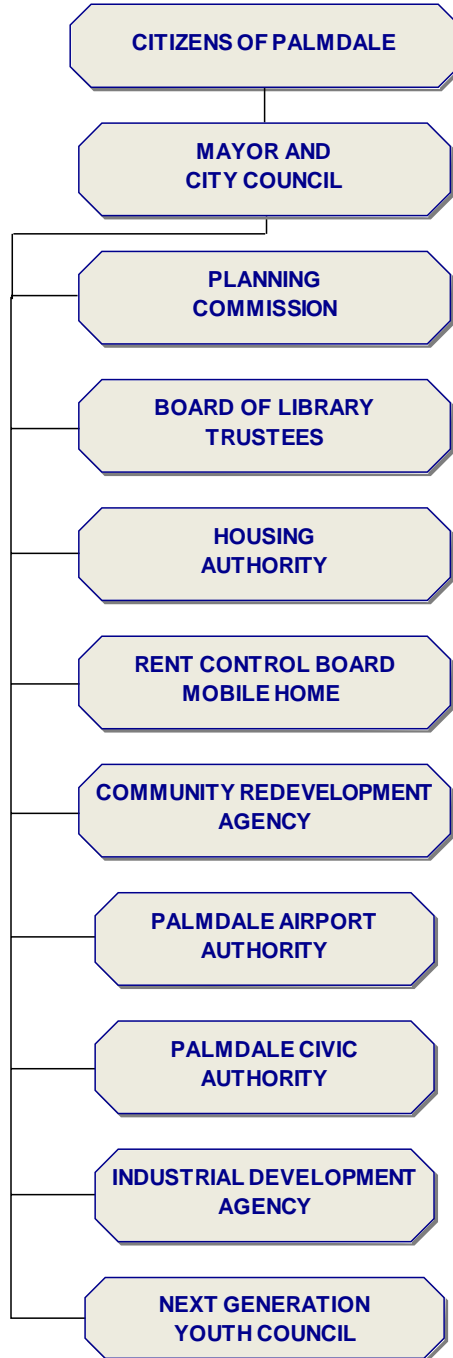


# COMMUNITY ORGANIZATION



## BOARDS AND COMMISSIONS



## DIRECTORY OF CITY OFFICIALS



**JAMES C. LEDFORD, JR.**  
Mayor



**MIKE DISPENZA**  
Mayor Pro Tem



**LAURA BETTENCOURT**  
Council Member



**STEVE HOFBAUER**  
Council Member



**TOM LACKEY**  
Council Member

### City Manager ~ Stephen H. Williams

Assistant City Manager ..... Laurie Lile  
Deputy City Manager ..... Nancy Quelland  
City Attorney ..... Wm. Matthew Ditzhazy  
Director of Finance ..... Betsy St. John  
Director of Public Safety &  
Community Relations..... Anne Ambrose  
Director of Public Works ..... Mike Mischel

## DIRECTORY OF CITY AGENCY & AUTHORITY OFFICIALS



### COMMUNITY REDEVELOPMENT AGENCY

James C. Ledford, Jr.	Chair
Mike Dispenza	Vice Chair
Laura Bettencourt	Member
Steven D. Hofbauer	Member
Tom Lackey	Member
Stephen H. Williams	Executive Director
Wm. Matthew Ditzhazy	Agency Attorney

### HOUSING AUTHORITY

James C. Ledford, Jr.	Chair
Mike Dispenza	Vice Chair
Laura Bettencourt	Commissioner
Steven D. Hofbauer	Commissioner
Tom Lackey	Commissioner
Vacant	Commissioner
Vacant	Commissioner
Stephen H. Williams	Executive Director
Wm. Matthew Ditzhazy	Authority Attorney

### INDUSTRIAL DEVELOPMENT AUTHORITY

James C. Ledford, Jr.	Chair
Mike Dispenza	Chair Pro Tem
Laura Bettencourt	Director
Steven D. Hofbauer	Director
Tom Lackey	Director
Stephen H. Williams	Executive Director
Wm. Matthew Ditzhazy	Authority Attorney

## DIRECTORY OF CITY AGENCY & AUTHORITY OFFICIALS

### PALMDALE CIVIC AUTHORITY

James C. Ledford, Jr.	Chair
Mike Dispenza	Vice Chair
Laura Bettencourt	Director
Steven D. Hofbauer	Director
Tom Lackey	Director
Stephen H. Williams	Executive Director
Wm. Matthew Ditzhazy	Authority Attorney

### PALMDALE AIRPORT AUTHORITY

James C. Ledford, Jr.	Chair
Mike Dispenza	Vice Chair
Laura Bettencourt	Director
Steven D. Hofbauer	Director
Tom Lackey	Director
Stephen H. Williams	Executive Director
Wm. Matthew Ditzhazy	Authority Attorney

## DIRECTORY OF CITY BOARDS & COMMISSIONS

### PLANNING COMMISSION

Vincent J. Dino	Chairman
Frederick C. Thompson	Vice Chairman
Linda A. Hughes	Commissioner
Kathryn MacLaren	Commissioner
Patricia Shaw	Commissioner

### BOARD OF LIBRARY TRUSTEES

Jill Mrantz	President
Mary L. Wells	President Pro Tem
Rebecca Cooksey	Trustee
Steven Hutson	Trustee
Delores J. Morris	Trustee

### MOBILE HOME PARK RENTAL REVIEW BOARD

Al Beattie	Public Member
William Hogrefe	Public Member
Lara Radosavcev	Owner Member
Diana Love	Alt. Public Member
Peter Eirich	Alt. Public Member
Vacant	Alt. Tenant Member
Vacant	Alt. Owner Member

# ABOUT THE CITY OF PALMDALE

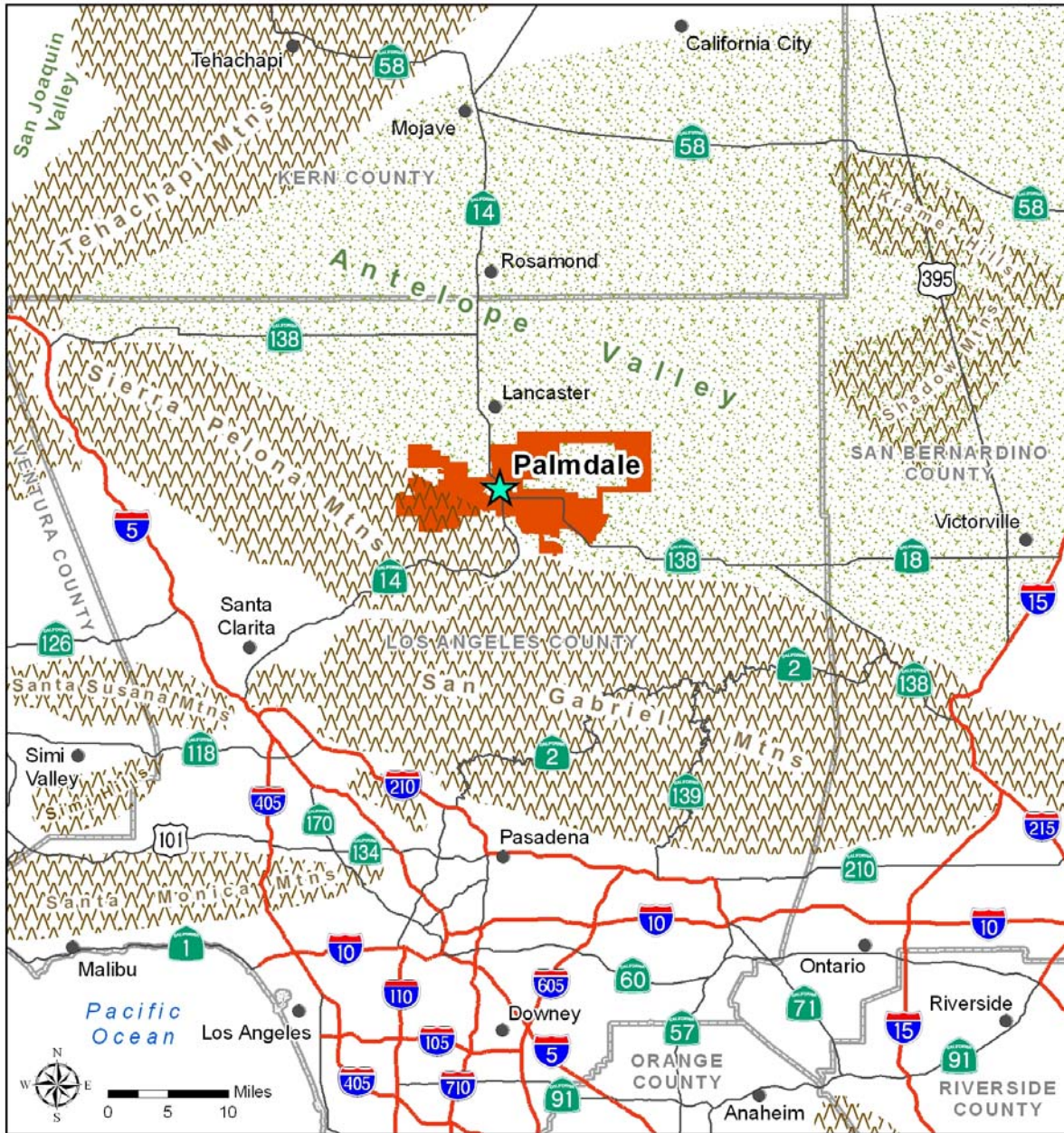


Figure 1: Map of the Antelope Valley

The city of Palmdale is located in the heart of the Antelope Valley. The Antelope Valley is located in the western side of the Mojave Desert and is approximately 3,000 square miles. On the northwest, the Valley is separated from the San Joaquin Valley by the Tehachapi Mountains. On the south and southwest, it is separated by the San Gabriel Mountains. The north and east boundaries of the Antelope Valley are distinguished by isolated buttes.

Hundreds of years ago, before any white settlements existed, the Kitanemuk Indians occupied this area. They were hunters and gatherers, depending almost entirely on the natural productivity of the land. They did not farm or practice animal husbandry, but they did trade with the Chumash of Santa Barbara, and ranged the foothills of the Antelope Valley. It is believed that many other tribes probably were in the Antelope Valley at one time or another, including the Yokuts, Chumash and Shoshone.

Today's Palmdale has its roots in two small, early communities: Harold (Alpine Station) and Palmenthal. Harold was a natural location for a community because it was at the crossroads of the two major routes on the Valley floor, the Southern Pacific Railroad tracks and Fort Tejon Road (now Barrel Springs Road). In the late 1890s Harold was reduced to a few residents when the railroad decided to build a larger station for its booster engines. Booster engines were needed to get the train over the San Gabriel Mountains, and they needed to be started on flat land. Harold was not flat, and so the new station was built a short distance north of Harold, at what is now central Palmdale.

Palmenthal came to be in 1886 when between 50 and 60 families of Swiss and German descent were moving westward from the Midwest to California. As the settlers came to the Antelope Valley and saw our Joshua trees, they mistook them for palm trees. The families settled about three miles southeast of the present Civic Center and called their new town Palmenthal. The 1890s were a decade of boom and bust spurred on by the lure of cheap land and good living. In 1899 the community relocated to the heart of present-day Palmdale, and changed its name to Palmdale. So this is how Palmdale came to be. Palmenthal and Harold both came to be abandoned, and both settlements relocated to the center of the new city of Palmdale by the new Southern Pacific railroad station.

The City of Palmdale was incorporated on August 24, 1962, under the general laws of the State of California and is located in the northern part of Los Angeles County. The City is 60 miles north of Los Angeles situated in the high desert at an elevation of 2,600 feet with an average mean temperature of 72 degrees Fahrenheit. The City has been one of the top growth areas in the state and country during the past twenty years. The City currently occupies a land area of 104 square miles and serves a population of 153,334. The population has increased 1,154% since the 1980 population of 12,227. There are eighty-eight cities in Los Angeles County with a total population of 9.9 million. Palmdale is the sixth largest city in the county. The City is empowered by state statute to extend its corporate limits by annexation, which occurs periodically when deemed appropriate by the governing council.

The City of Palmdale is a Charter City governed under the council/manager form of local government. The five member City Council consists of an elected Mayor who serves a two-year term and four other members who are elected at large to overlapping four-year terms. The Mayor Pro Tem is selected from among the City Council members. The City Manager serves at the pleasure of the City Council and administers the City's affairs and carries out policies established by the City Council. The City Council is responsible for passing ordinances, adopting the budget, appointing committees, and hiring both the City Manager and City Attorney. The City Manager is responsible for carrying out the policies and ordinances of the council, for overseeing the day-to-day operations of the government, and for appointing various department heads.

During the 1980's, Los Angeles area residents looking for affordable housing, aerospace workers following their jobs, and people seeking a better quality of life associated with small towns and high desert living, began settling in Palmdale. By 1990 the population had swelled to 68,842, and today 153,334 people call Palmdale home.

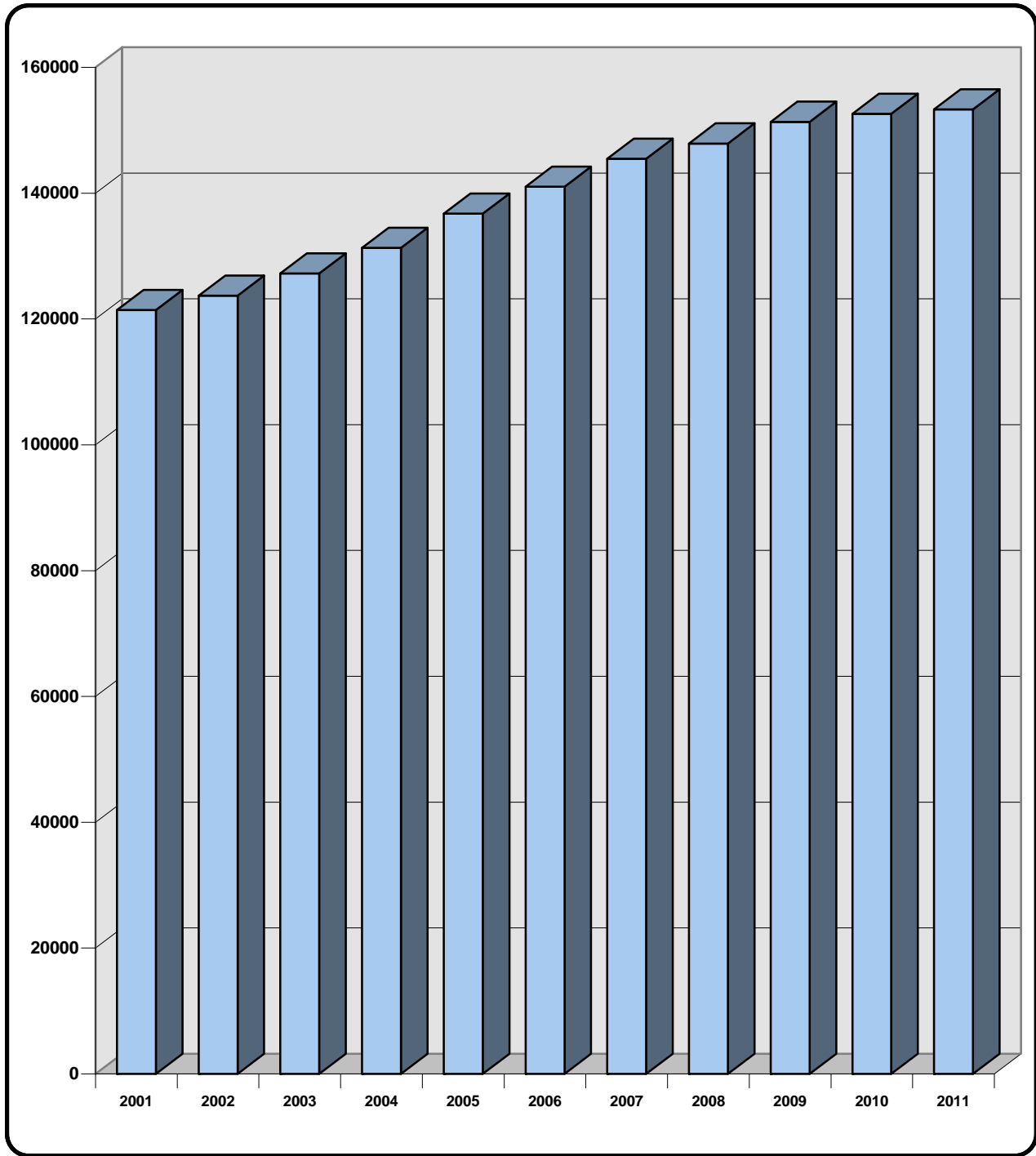


Figure 1: Population Growth

POPULATION PROFILE

U.S. CENSUS COMPARISON BETWEEN 1980, 1990 AND 2000

	<u>1980</u>		<u>1990</u>		<u>2000</u>	
<b><u>TOTAL POPULATION</u></b>	12,277		68,842		116,670	
<b><u>RACE</u></b>						
White	9,798	79.8%	52,101	75.7%	68,935	59.1%
Black	420	3.4%	4,398	6.4%	18,443	15.8%
Asian	150	1.2%	3,030	4.4%	5,733	4.9%
Amer. Indian/Eskimo	208	1.7%	648	.9%	2,245	1.9%
Other	1,701	13.9%	8,665	12.6%	27,860	23.9%
<b><u>SEX</u></b>						
Male	5,999	48.9%	34,723	50.4%	57,338	49.1%
Female	6,278	51.1%	34,119	49.6%	59,332	50.9%
<b><u>AGE</u></b>						
0-4	1,103	9.0%	8,940	13.0%	10,808	9.3%
5-19	2,938	23.9%	16,941	24.6%	26,757	33.0%
20-64	7,123	58.0%	39,687	57.6%	62,207	53.2%
65+	1,113	9.1%	3,274	4.8%	6,520	5.5%
<b><u>MARITAL STATUS</u></b>						
Single	1,978	16.1%	9,975	14.5%	21,000	18.0%
Married	5,598	45.6%	30,180	43.9%	45,968	39.4%
Separated	293	2.4%	1,252	1.8%	18,901	16.2%
Widowed	551	4.5%	1,598	2.3%	N/A	N/A
Divorced	916	7.5%	4,070	5.9%	N/A	N/A
Excluded	2,941	23.9%	21,767	31.6%	30,801	26.4%
<b><u>MEDIAN AGE</u></b>						
Male	28.7 years		25.2 years		28.2 years	
Female	28.7 years		24.9 years		28.2 years	
Total	28.7 years		25.1 years		28.2 years	

Source: Federal Census Data

## PALMDALE DEMOGRAPHICS

### **Regional Population**

City of Palmdale <sup>5</sup> .....	153,334
Los Angeles County <sup>3</sup> .....	9,858,989

### **Race and Ethnicity<sup>2</sup>**

White .....	48.4%
African American .....	17.9%
Native American .....	0.8%
Asian/Pacific Islander .....	3.7%
Other .....	23.6%
Two or More Races .....	5.7%

### **Age<sup>2</sup>**

Median Age .....	29.8
------------------	------

### **Education (educational attainment by population 25+)<sup>2</sup>**

No High School Diploma .....	19.9%
High School Graduate .....	28.4%
Some College, no degree .....	27.6%
Associate's Degree .....	8.1%
Bachelor's Degree .....	11.4%
Master's Degree .....	3.5%
Professional School Degree .....	0.8%
Doctoral Degree .....	0.5%

### **Housing<sup>2</sup>**

2010 Median Housing .....	\$150,000
Annual % of Change .....	11.11%
Affordability Index .....	83
Housing Units .....	46,605
Detached Units .....	37,030
Persons per Household .....	3.54
Homeowners .....	72.6%

### **Average Household Income – City<sup>2</sup>**

93550 .....	\$56,535
93551 .....	\$102,910
93552 .....	\$71,428

## PALMDALE ECONOMIC DEMOGRAPHICS

<b>Employment (by population age 16+)<sup>2</sup></b>	<b>61,097</b>
Architect/Engineer	2.6%
Arts/Entertainment/Sports	1.9%
Building Grounds Maintenance	4.7%
Business Financial Ops	3.5%
Community Social Services	1.1%
Computer/Mathematical	1.7%
Construction/Extraction	7.7%
Education/Training/Library	4.7%
Farm/Fish/Forestry	0.2%
Food Prep/Serving	5.4%
Health Practitioner/Tech	3.7%
Healthcare Support	2.1%
Maintenance Repair	5.1%
Legal	0.6%
Life/Phys/Soc Science	0.2%
Management	8.3%
Office/Admin	14.8%
Production	6.3%
Protective Services	3.1%
Sales/Related	11.6%
Personal Care/Service	3.7%
Transportation/Moving	7.0%

### Top Ten 2010 Leading Area Employers<sup>2</sup>

<u>Employer</u>	<u>Products</u>	<u>Number of Employees</u>
Edwards Air Force Base	Aerospace/Military	10,610
China Lake Naval Weapons	Aerospace/Military	6,734
County of Los Angeles	Government	3,953
Lockheed Martin	Aerospace/Military	3,100
Palmdale School District	Education	2,739
Antelope Valley Hospital	Medical	2,722
Northrop Grumman	Aerospace/Military	2,611
AV Union High School District	Education	2,054
California Correctional Institute-Tehachapi	Prison	1,911
Bank of America	Financial Institution	1,846

<sup>1</sup> City of Palmdale

<sup>2</sup>Source: GAVEA, Claritas Inc., Economic Roundtable Report 2010

<sup>3</sup> Source: U.S. Census Bureau, 2009 Estimate

<sup>4</sup> AVUHSD website, 2008-09 SARC Reports

<sup>5</sup> California Department of Finance

## MISCELLANEOUS PALMDALE STATISTICS

### General Information<sup>1</sup>

Date of Incorporation .....	August 24, 1962
Form of Government .....	Council/Manager
Land area in square miles .....	104

### Hospitals<sup>1</sup>

Number of hospitals .....	1
Number of patient beds .....	250

### Libraries<sup>1</sup>

Number of City libraries .....	1
Library circulation .....	247,579
Total volumes owned .....	71,726
Library programs .....	507

### Parks & Recreation<sup>1</sup>

Park acreage .....	332.8
Number of developed parks .....	10
Number of park playgrounds .....	7
Number of swimming and wading pools .....	4
Number of community buildings .....	3
Number of sports facilities .....	5

### Public Safety<sup>1</sup>

Number of law violations .....	6,325
Total Arrests .....	8,327

### Public Schools<sup>4</sup>

Elementary schools .....	39
Annual enrollment .....	31,267
Secondary Schools .....	5
Annual enrollment .....	11,941

## CITY GOVERNMENT AND SERVICES

### City Government and Services

Meeting the needs of the City's residents and the challenges associated with rapid change is the responsibility of the five-member City Council supported by the City Manager and his staff. The City Council also serves as the governing body for the Community Redevelopment Agency, the Palmdale Civic Authority, the Housing Authority of the City of Palmdale, the Industrial Development Authority, and the Palmdale Airport Authority.

Three advisory boards are appointed by the City Council: the Planning Commission consisting of five members each serving a two-year term; the Library Board of Trustees consisting of five members each serving a three-year term; and the Mobile Home Rental Review Board consisting of eight members each serving a one-year term

The City Manager's Office implements the policies of the City Council and manages all City services and administrative functions. The City Manager oversees functions and departments responsible for:

- Minimizing and preventing litigation against the City (City Attorney).
- Maintaining care and custody of all official records, publishing/posting legal advertising, and updating municipal code books (City Clerk).
- Administering personnel services (Human Resources).
- Developing and implementing emergency services and risk management programs (Risk Management).
- Managing, planning, and reporting all aspects of the City's finances including revenue administration and budget control, purchasing, and debt obligation administration (Finance/City Treasurer).
- Administering development functions of the General Plan and approved specific plans, code enforcement, and business licenses (Planning).
- Conducting programs to suppress crime, gang, and drug activity in the community such as the Crime Prevention, Drug Education, Partners Against Crime Programs, Partners for a Better Palmdale Program and administering parking citations (Public Safety and Community Relations).
- Maintaining City buildings and streets and enforcing building codes (Building & Safety).
- Anticipating and responding to the community's transportation needs, maintaining streets and flood control facilities, and administering the capital improvement program, assessment districts, and the solid waste policy (Public Works).
- Planning, developing, and implementing meaningful and comprehensive recreational programs and activities, and developing parks and recreation facilities (Parks and Recreation).
- Providing comprehensive library services to the public (Library).

City Government and Services, (continued)

The City contracts for police protection through the Los Angeles County Sheriff's Department and with the Los Angeles County Department of Animal Care and Control for animal licensing, pick-up, care, and boarding at a local shelter in Lancaster.

Meeting Current Needs and Implementing Tomorrow's Vision

The large increase in the City's population over the past decade has brought with it a diverse range of needs from City parks and recreational programs for youths and adults to new industrial sites for entrepreneurs; from Dial-A-Ride services for local seniors and disabled residents to Metrolink, buses, and carpools for commuting workers; from a performing arts center for cultural enthusiasts to state-of-the-art computer technology for library patrons; from redevelopment to eliminate blight, provide replacement low-income housing, and foster economic growth to planning new residential developments for future home buyers.

As demonstrated by the high level of median household income, Palmdale has a highly skilled work force that could provide employers with a large pool of human resources.

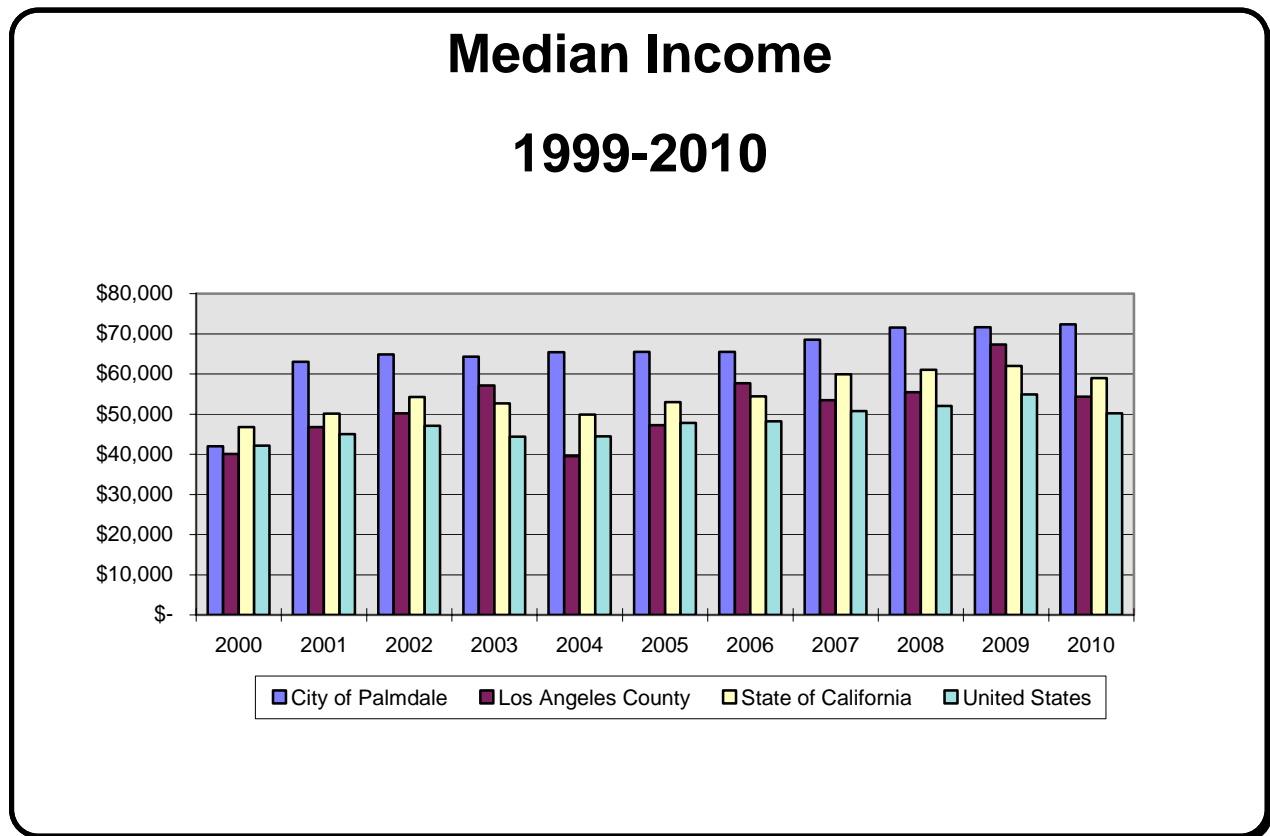


Figure 2: Median Household Income

In addition to the City Council, there are several other bodies that act to govern Palmdale and provide the highest possible municipal service to its residents. Those other governmental entities are described as follows:

#### Community Redevelopment Agency (CRA)

The Community Redevelopment Agency's primary purpose is to eliminate blighted areas within the City by encouraging development of residential, commercial, industrial, recreational and public facilities. The Community Redevelopment Agency is comprised of two divisions: Economic Development and Housing. Staff time and resources are committed to maximizing the potential of the City's Redevelopment Agency by implementing an aggressive economic development program to diversify and strengthen the City's economic base. The Housing Division also offers an increasing variety of programs designed to help residents of Palmdale improve their homes and neighborhoods, such as the Single Family Rehabilitation Loan program, Mobile Home Rehabilitation Loan program and the Citywide Mortgage Assistance program.

#### Palmdale Civic Authority (PCA)

The Palmdale Civic Authority was created under a joint powers agreement between the City of Palmdale and the Community Redevelopment Agency of the City of Palmdale for the purpose of financing public improvements in the City. The Palmdale Civic Authority issues the debt and then loans the proceeds to the City or the Community Redevelopment Agency to finance projects that benefit the project areas or the City.

#### Industrial Development Authority (IDA)

In February 1995, the Industrial Development Authority was created by City Council Ordinance for the purpose of financing industrial development in the City. In FY 2007-08, the Industrial Development Authority anticipates working with manufacturers and industrial companies to develop new industrial sites in Palmdale.

#### Housing Authority of the City of Palmdale (HA)

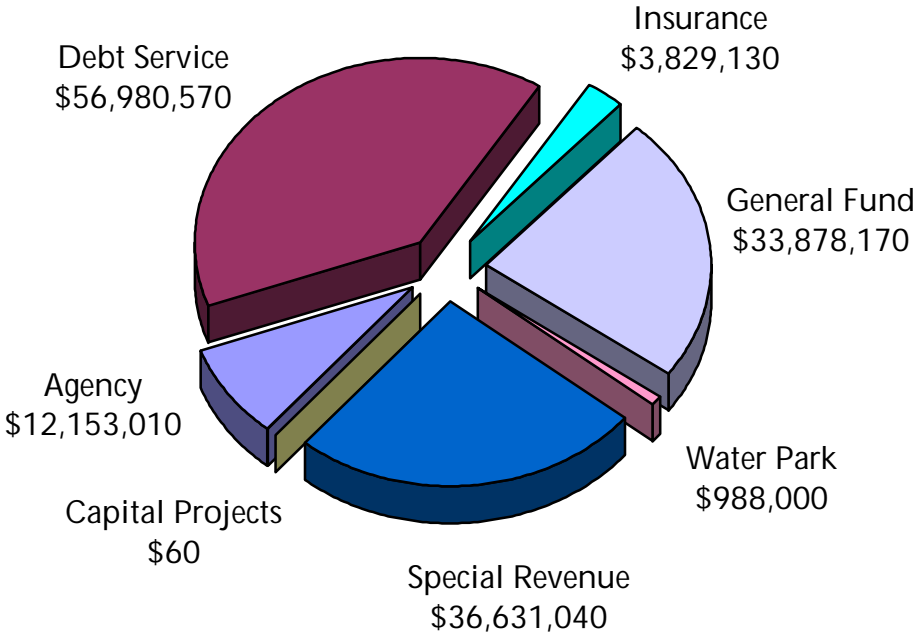
In May 1996, the Housing Authority of the City of Palmdale was created for the purpose of working with the mobile home parks located in the City. In FY 1997-98 the Housing Authority, with the Community Redevelopment Agency, assisted LINC Housing, Inc., a non-profit agency, in acquiring three mobile home parks. LINC Housing is now responsible for paying the bonds and utilizing the rents collected from those parks.

#### Meeting the Future

With a large percentage of highly skilled workers, land available for industrial, commercial, and residential development, and an aggressive economic development program to diversify and strengthen the City's economic base, the future is filled with change and opportunity. The City's government is working toward building a bright future for the citizens of Palmdale.

# City of Palmdale and Community Redevelopment Agency

## FY 2011-12 Revenue



### REVENUE BY FUND TYPE

Figure 5: Fiscal Year 2011-12 Revenues

Total: \$144,459,980

## Summary of Projected FY 2011-12 General Fund Revenues

### REVENUES

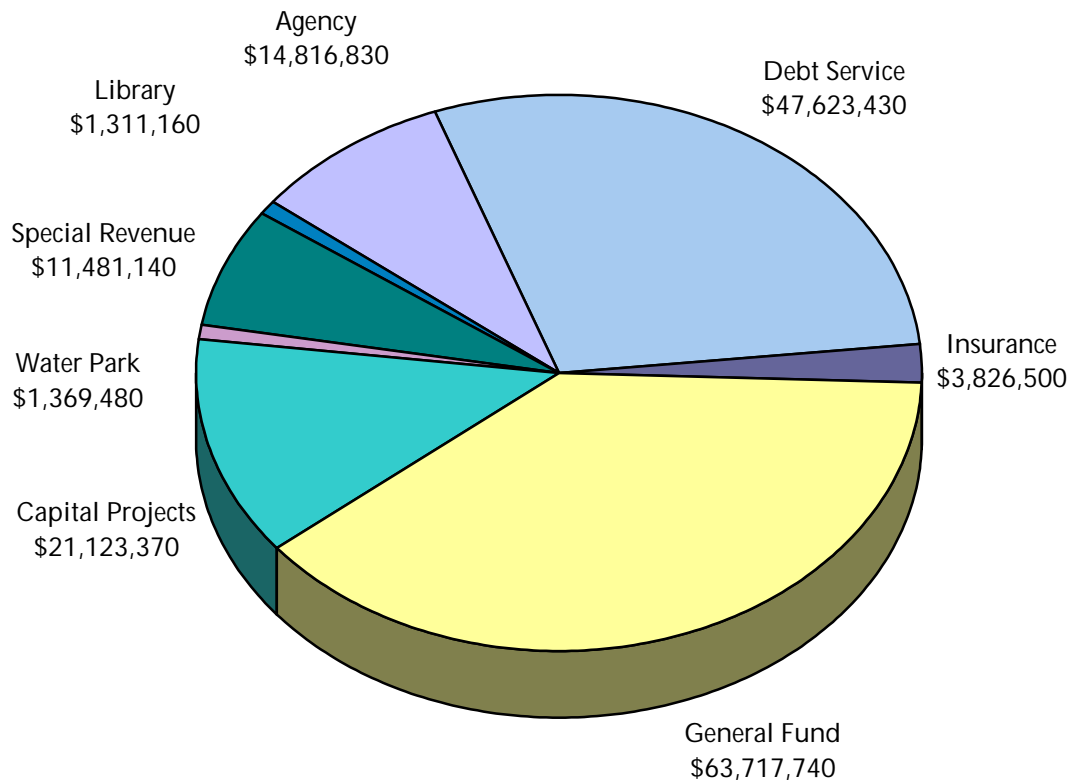
#### I. GENERAL INFORMATION

The narrative below describes each of the funding categories of General Fund Revenue.

1. Property Tax is estimated at \$13,818,810 or 40.79% of General Fund revenues and is the largest General Fund revenue source.
2. Fees and Charges amount to \$5,974,540 or 17.64% of General Fund revenues and is the second largest General Fund revenue source. This category includes motor vehicle license fees, fines and forfeitures; Community Redevelopment Agency rent support, administration fees and departmental fees and charges.
3. Other Taxes total \$7,658,200 or 22.60% of General Fund revenues, and is the third largest revenue source. This category includes property transfer taxes and transient occupancy, franchise and business license taxes.
4. Sales Tax is projected at \$4,986,070 or 14.72% of General Fund revenues and represents the fourth largest category for the General Fund. The Community Redevelopment Agency transfers an additional \$8,211,050 in sales tax to the General Fund.
5. Licenses and Permits total \$1,195,000 or 3.53% of General Fund revenues and represents the fifth largest revenue for the General Fund. This category includes animal licenses and permits for businesses, buildings, grading, signs, etc.
6. Interest and Other Revenues total \$245,550 or 0.72% of General Fund revenues and is the smallest revenue source. This category includes interest earned on pooled investments and cash balances, as well as subventions and grants, donations for community programs and other miscellaneous revenues.

# City of Palmdale and Community Redevelopment Agency

## FY 2011-12 Expenditures



### EXPENDITURES BY FUND TYPE

Figure 6: Fiscal Year 2011-12 Expenditures

Total: \$165,269,650

**DEPARTMENTAL EXPENDITURES  
AS A PERCENTAGE OF GENERAL FUND BUDGET  
FISCAL YEAR 2011-12**

<b>DEPARTMENT</b>	<b>FY 2011-12 BUDGET</b>	<b>PERCENTAGE OF BUDGET</b>
<b>Public Safety</b>		
Public Safety	19,337,700	30.35%
Public Safety Officers	562,240	0.88%
Crime Prevention Act	465,890	0.73%
E Byrne JAG Grant 2009	29,970	0.05%
E Byrne JAG Grant 2010	298,020	0.47%
Parking Enf and Admin Citations	401,650	0.63%
Community Service Officers	316,380	0.50%
Emergency Preparedness	115,580	0.18%
Animal Control	800,000	1.26%
Forfeiture	10,400	0.02%
<b>Total Law Enforcement</b>	<b>22,337,830</b>	<b>35.07%</b>
<b>Public Works</b>		
Public Works Administration	878,760	1.38%
Engineering	400,080	0.63%
Drainage Administration	172,880	0.27%
Traffic Engineering	1,897,170	2.98%
Geographic Information Systems	255,470	0.40%
Street Maintenance	4,695,670	7.37%
Regional Basin Maintenance	28,500	0.04%
Transit Services	2,745,510	4.31%
Park-N-Ride	75,300	0.12%
Government Facilities	2,257,290	3.54%
Landscape Maint - Gen Benefit	624,250	0.98%
<b>Total Public Works</b>	<b>14,030,880</b>	<b>22.02%</b>
<b>City Attorney</b>		
City Attorney	2,294,610	3.60%
Risk Management	1,237,150	1.94%
<b>Total City Attorney</b>	<b>3,531,760</b>	<b>5.54%</b>
<b>Planning Department</b>		
Planning	1,029,800	1.62%
Planning Commission	8,590	0.01%
<b>Total Planning</b>	<b>1,038,390</b>	<b>1.63%</b>

**DEPARTMENTAL EXPENDITURES  
AS A PERCENTAGE OF GENERAL FUND BUDGET  
FISCAL YEAR 2011-12**

<u>DEPARTMENT</u>	<u>FY 2011-12 BUDGET</u>	<u>PERCENTAGE OF BUDGET</u>
<b>Parks and Recreation</b>		
Special Events	788,720	1.24%
Cultural Center	193,530	0.30%
Legacy Commons-Senior Center	220,260	0.35%
Hammack Activity Center	28,610	0.04%
Recreation	702,300	1.10%
Aquatics	753,290	1.18%
Youth Sports	379,380	0.60%
Adult Sports	223,850	0.35%
Oasis Park Rec Ctr	457,770	0.72%
Marie Kerr Park Rec Center	217,670	0.34%
Parks Maintenance	3,438,870	5.40%
Plant 42 Heritage Airpark	64,900	0.10%
Palmdale Playhouse	530,770	0.83%
<b>Total Parks and Recreation</b>	<b>7,999,920</b>	<b>12.55%</b>
<b>Administration</b>		
City Council	171,400	0.27%
City Manager	1,218,060	1.91%
City Clerk	300,860	0.47%
Elections	190,990	0.30%
Records Management	310,730	0.49%
Communications	658,920	1.03%
Finance	1,308,880	2.05%
Human Resources	616,120	0.97%
Information Services	1,688,340	2.65%
<b>Total Administration</b>	<b>6,464,300</b>	<b>10.14%</b>
<b>General City</b>	<b>7,153,870</b>	<b>11.23%</b>
<b>Building &amp; Safety</b>	<b>1,160,790</b>	<b>1.82%</b>
<b>General Fund Expenditures</b>	<b>63,717,740</b>	<b>100.00%</b>

**THIS PAGE INTENTIONALLY LEFT BLANK**